

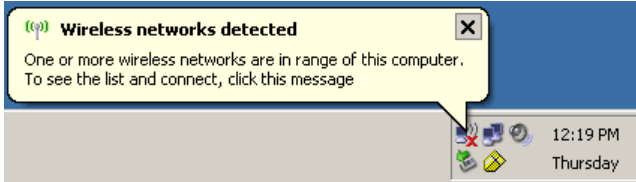
Pre-requisites for accessing GCC Student wireless network:

- 1) **802.11G wireless network card successfully installed and installed.**
- 2) **Under Windows XP the ‘Wireless Zero Configuration’ service must be running.**

NOTE: Student wireless internet access is limited to ONLY http and https sites.

Under Windows XP, when a student computer is within range of a GCC Wireless Access Point, a caption should appear indicating ‘Wireless networks detected’.

Click on the caption and view the available networks.

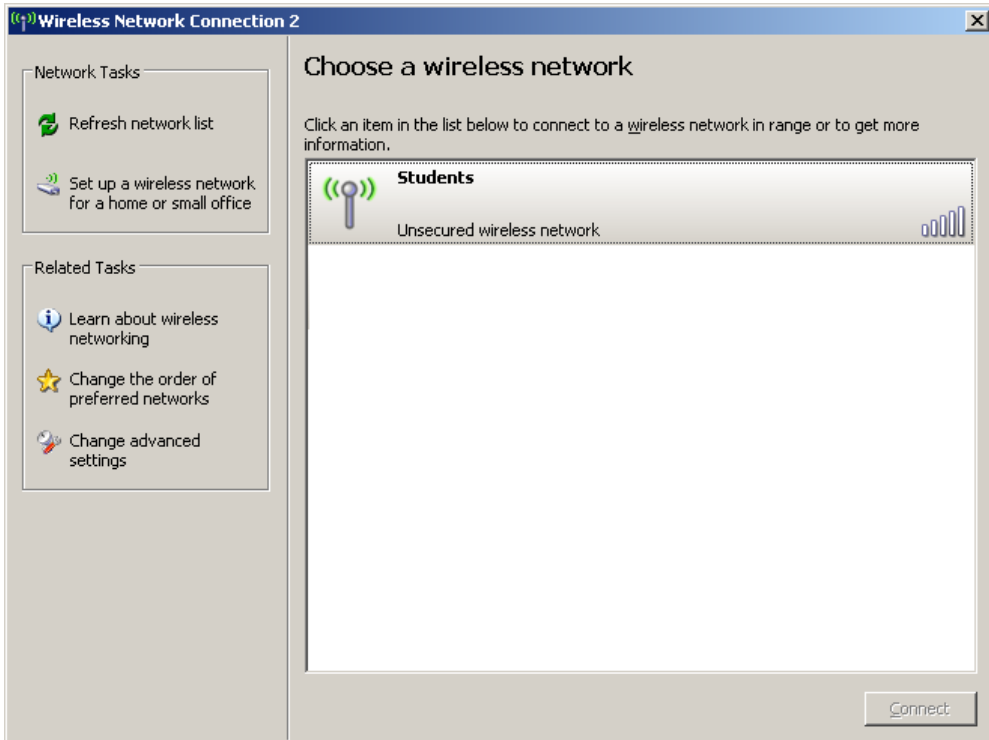


OR

** If the caption in the previous image **does not appear**, right-click on the wireless network icon in the system tray and select ‘View Available Wireless Networks’.



Select ‘Students’ and click ‘Connect’

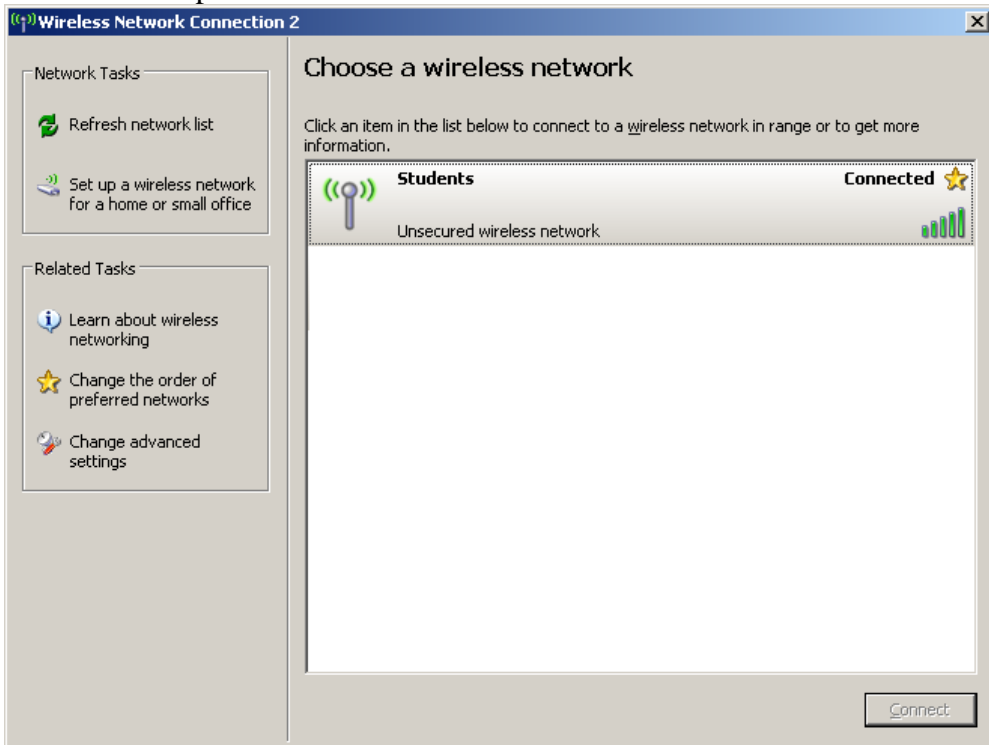


Germanna Community College – Student Wireless Access
Basic Connectivity and Troubleshooting Guide Fall 2007

If the following prompt appears, click **‘Connect Anyway’**

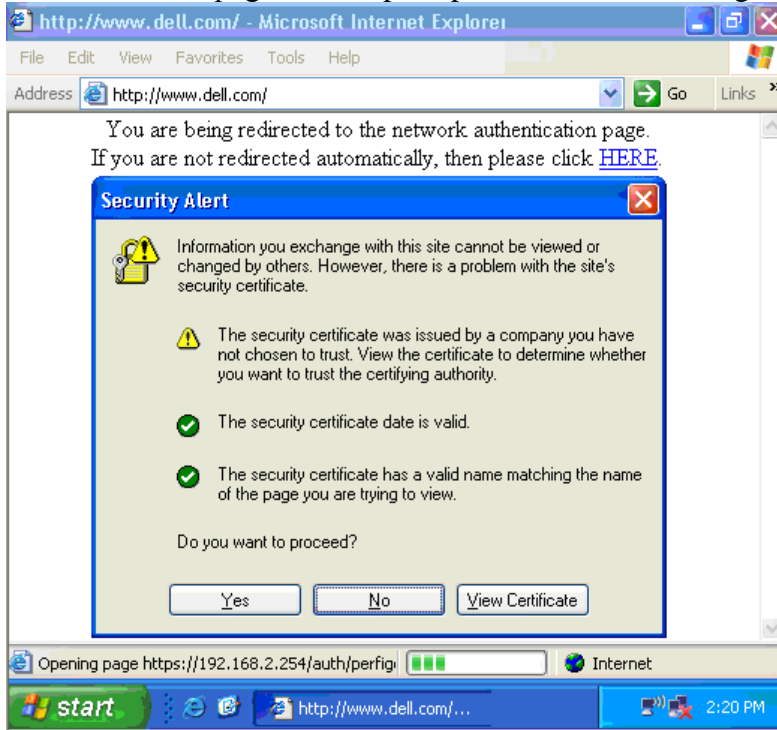


The client computer will then connect to the wireless network.



Germanna Community College – Student Wireless Access
Basic Connectivity and Troubleshooting Guide Fall 2007

Next, Launch a browser window. The session will be redirected to a ‘Clean Access Authentication’ page. When prompted with the following Security Alert, click ‘Yes’.



When the following page appears, click on the ‘Guest Access’ button.



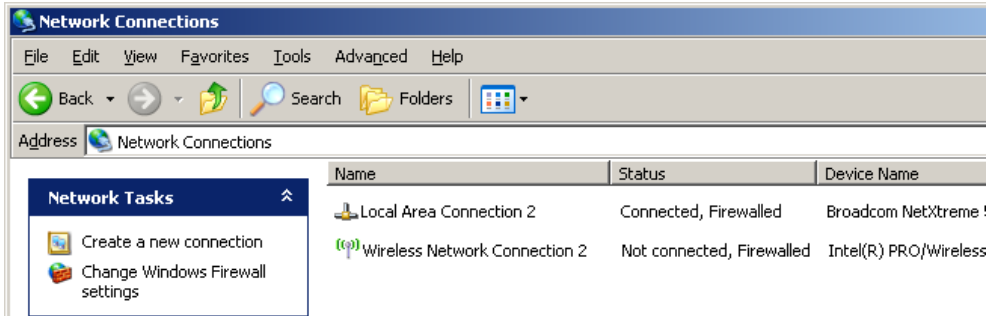
Germanna Community College – Student Wireless Access
Basic Connectivity and Troubleshooting Guide Fall 2007

If a window similar to the following appears, click on the hyperlink for the site you wish to access – in this case <http://www.dell.com/>



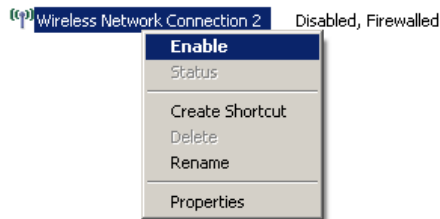
***** **BASIC TROUBLESHOOTING** *****

If the wireless network icon **does not appear** in the system tray,
Start → Control Panel → Network Connections →

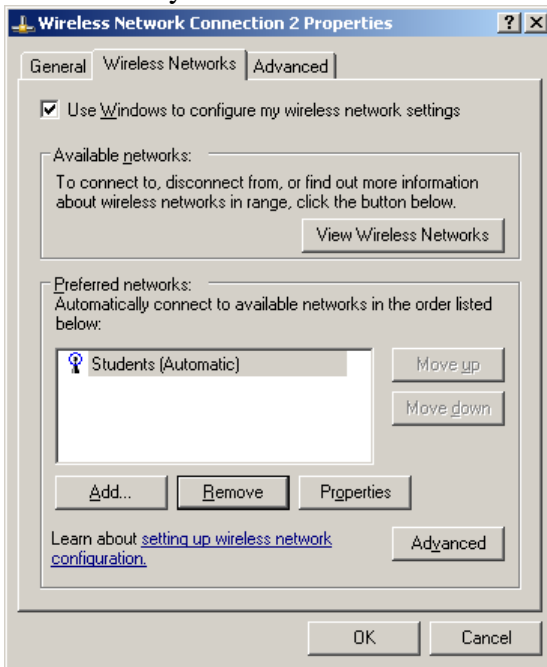


Ensure that the wireless network card is enabled.

If the wireless network card is **Disabled**, right-click on the wireless card and select **Enable**.

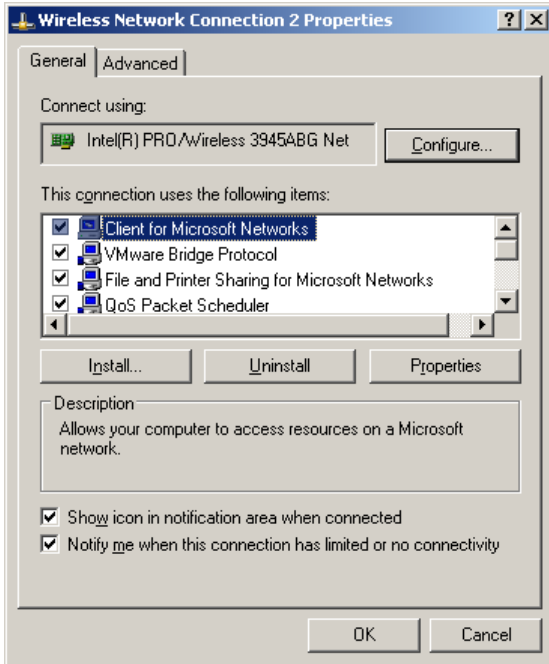


If viewing the properties of the wireless network card and the 'Wireless Networks' tab **does not appear**, ensure that the 'Wireless Zero Configuration' service is running.
This is what you should see if the Wireless Zero Configuration service is running:



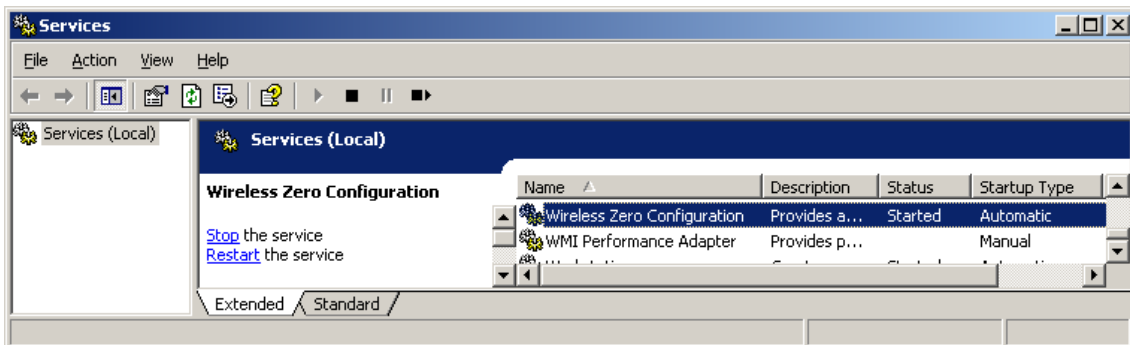
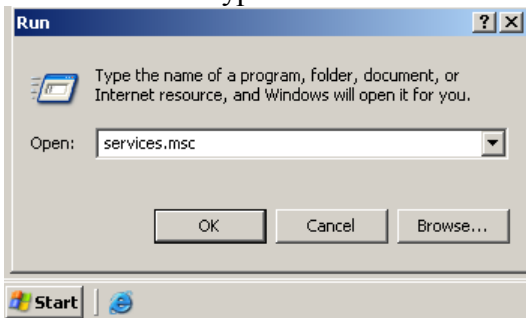
Germanna Community College – Student Wireless Access
Basic Connectivity and Troubleshooting Guide Fall 2007

If the ‘Wireless Zero Configuration’ Service **is not running**, you will not see the ‘Wireless Networks’ tab under the wireless network card properties.



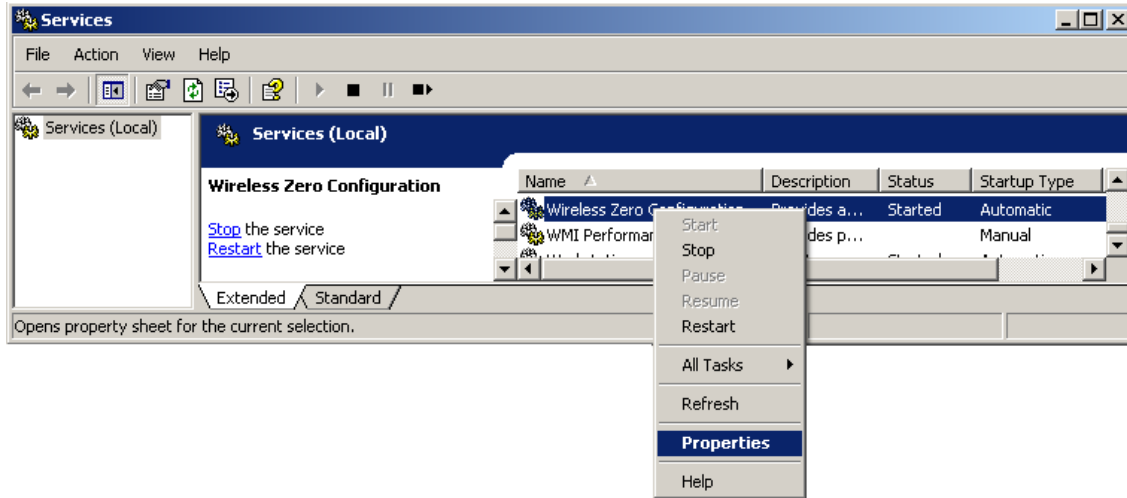
To start the ‘Wireless Zero Configuration’ service:

Start → Run → type ‘services.msc’ and click ‘OK’.



If the service is stopped, right-click on the service and select ‘properties’

Germanna Community College – Student Wireless Access Basic Connectivity and Troubleshooting Guide Fall 2007



Under startup type, select **'Automatic'**
Click **'Start'**
Click **'Apply'**
Click **'OK'**

